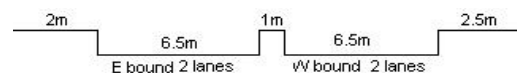
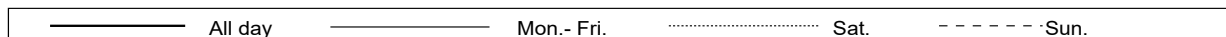
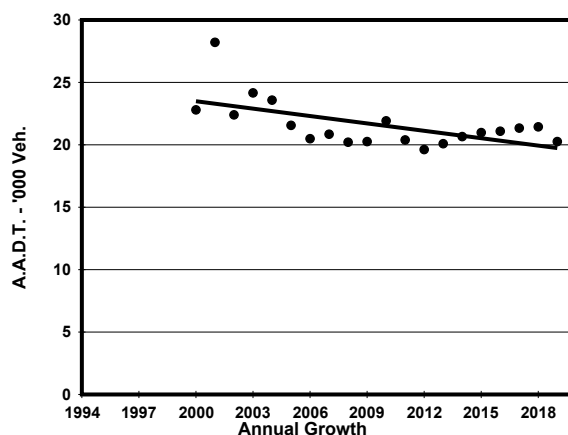
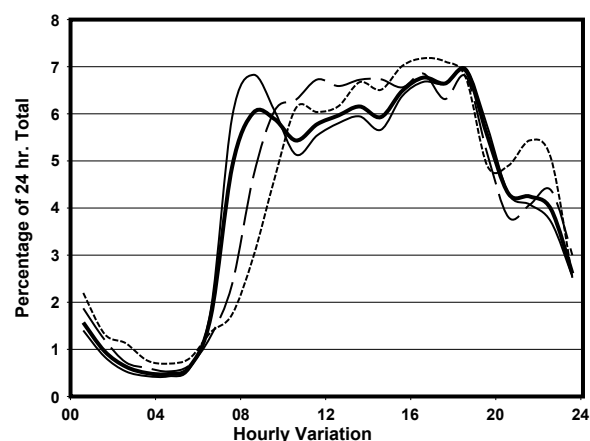
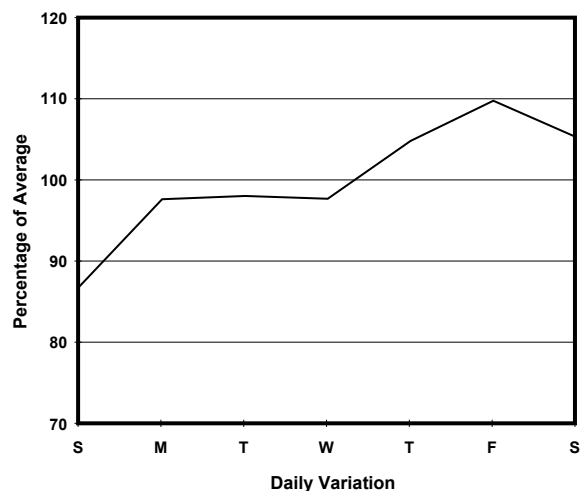
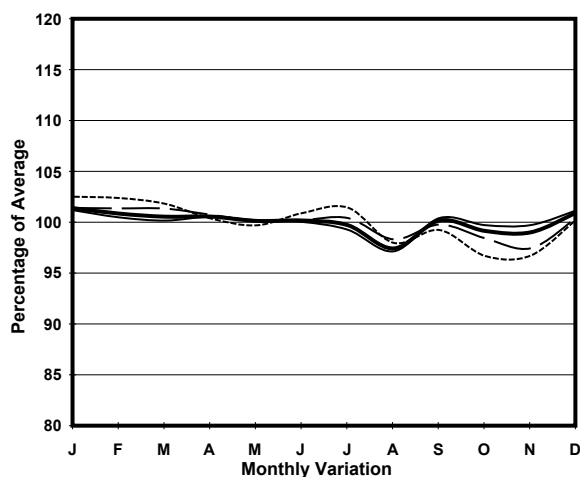


YEAR 2019
 COVERAGE (B) STATION 4206
 ROAD NETWORK MAJOR
 ROAD TYPE DISTRICT DISTRIBUTOR

LINK CORNWALL ST (from WATERLOO RD to NAM CHEONG ST)



1. TRAFFIC FLOW VARIATION AND GROWTH



2. TRAFFIC CHARACTERISTICS (BY DIRECTION)

Parameter	All - Day	Mon. - Fri.	Sat.	Sun.
EAST BOUND				
A.A.D.T.	10500	10740	11120	9200
R 12 / 24 - %	74.4	74.8	74.6	71.6
R 16 / 24 - %	90.5	90.9	89.9	88.6
AM Peak Hour	0800-0900	0800-0900	0900-1000	0900-1000
One-way flow at AM peak hour	730	830	790	480
T - % (AM)	-	8.3	-	-
PM Peak Hour	1800-1900	1800-1900	1800-1900	1800-1900
One-way flow at PM peak hour	740	740	790	700
T - % (PM)	-	5.5	-	-
Prop.of commercial vehicles - 16 hr.	-	7.7	-	-
WEST BOUND				
A.A.D.T.	9760	9990	10350	8540
R 12 / 24 - %	71.2	72.2	70.7	66
R 16 / 24 - %	91.4	91.9	90.3	89.8
AM Peak Hour	0900-1000	0900-1000	0900-1000	0900-1000
One-way flow at AM peak hour	540	590	520	340
T - % (AM)	-	6.4	-	-
PM Peak Hour	1600-1700	1700-1800	1600-1700	1600-1700
One-way flow at PM peak hour	700	720	770	680
T - % (PM)	-	3.7	-	-
Prop.of commercial vehicles - 16 hr.	-	8.1	-	-

3. OTHER INFORMATION AND COMMENT

4. Vehicle classification and occupancy - Monday to Friday

Time		Class of vehicle									
		Motor Cycle	Private Car	Taxi	Private LB	PLB	Goods veh.		Non Fr. Bus	Fr. Bus	
							Light	M & H		SD	DD
0700-0800	Pro	1.6	46.2	21.3	6.0	0.0	6.0	1.6	14.9	0.1	2.3
	Ocp	1.0	1.5	2.2	4.9	0.0	1.8	1.5	14.1	13.0	44.7
0800-0900	Pro	2.2	57.8	14.7	3.3	0.8	10.8	2.2	6.1	0.0	2.1
	Ocp	1.0	1.4	2.2	7.3	1.7	1.5	1.9	15.1	0.0	42.3
0900-1000	Pro	0.9	60.8	13.8	0.6	0.0	17.2	1.7	2.9	0.0	2.2
	Ocp	1.0	1.4	2.0	1.5	0.0	1.5	1.2	14.5	0.0	26.7
1000-1100	Pro	2.0	46.2	15.9	1.6	0.0	23.7	4.5	2.9	0.1	3.1
	Ocp	1.0	1.3	2.1	1.3	0.0	1.6	1.5	5.9	1.0	23.0
1100-1200	Pro	1.5	49.0	16.5	3.4	0.0	23.9	0.7	2.6	0.0	2.3
	Ocp	1.0	1.4	1.8	2.2	0.0	1.6	1.0	10.4	0.0	21.2
1200-1300	Pro	1.6	49.9	18.1	6.0	0.0	15.7	2.8	3.6	0.0	2.2
	Ocp	1.0	1.5	2.1	8.2	0.0	1.8	1.4	17.2	0.0	31.9
1300-1400	Pro	1.0	54.2	18.8	2.9	0.0	15.9	1.6	3.5	0.0	2.1
	Ocp	1.0	1.6	1.7	4.6	0.0	1.7	1.6	12.8	0.0	29.0
1400-1500	Pro	1.4	51.8	13.7	2.1	0.0	21.7	2.8	4.2	0.1	2.2
	Ocp	1.0	1.6	1.8	2.7	0.0	1.6	1.0	5.3	1.0	27.4
1500-1600	Pro	0.6	58.3	16.6	2.5	0.0	15.3	1.3	3.2	0.0	2.2
	Ocp	1.0	1.5	1.7	5.8	0.0	1.7	1.3	7.9	0.0	29.0
1600-1700	Pro	2.2	56.5	19.3	2.2	0.0	10.6	1.1	5.8	0.0	2.3
	Ocp	1.2	1.5	1.7	4.3	0.0	1.5	2.0	13.5	0.0	30.6
1700-1800	Pro	1.3	68.7	14.9	1.6	0.0	8.1	1.3	1.6	0.0	2.4
	Ocp	1.0	1.6	1.9	3.6	0.0	1.7	1.0	5.6	0.0	45.5
1800-1900 Peak hour	Pro	1.5	70.3	13.8	0.0	0.0	8.5	0.6	3.5	0.0	1.9
	Ocp	1.0	1.5	2.0	0.0	0.0	1.4	1.5	16.0	0.0	58.6
1900-2000	Pro	2.2	68.7	15.7	0.0	0.0	7.5	0.6	3.1	0.0	2.2
	Ocp	1.0	1.4	1.9	0.0	0.0	1.5	1.0	10.5	0.0	34.6
2000-2100	Pro	3.2	65.9	21.2	0.0	0.0	5.4	0.0	1.4	0.0	2.9
	Ocp	1.0	1.5	1.7	0.0	0.0	1.7	0.0	2.3	0.0	29.8
2100-2200	Pro	3.0	56.8	26.4	0.0	0.0	8.0	0.5	2.5	0.0	2.9
	Ocp	1.0	1.6	1.9	0.0	0.0	1.8	2.0	1.0	0.0	27.6
2200-2300	Pro	2.2	57.2	31.3	0.0	0.0	3.2	1.6	1.1	0.0	3.4
	Ocp	1.3	1.5	2.0	0.0	0.0	1.5	1.3	2.5	0.0	26.3
16 hours	Pro	1.7	57.9	17.5	2.0	0.1	12.8	1.6	4.0	0.1	2.4
	Ocp	1.0	1.5	1.9	5.0	1.7	1.6	1.4	11.8	5.0	33.1

Legend: Pro. Proportion of vehicles in % (Sum may not add up to 100% due to figure rounding)*

Ocp. Average occupancy of vehicles including both driver and passengers*

M&H Medium and Heavy

* All traffic data are collected from combined bounds